

chameleon

Next generation sample
preparation for cryo-EM
based on Spotiton



a rapid and efficient path to quality frozen grids for cryo-EM

Recent advances in cryo-EM have led to an explosion of interest in the technique for challenging structural biology projects. Producing quality frozen grids remains one of the major bottlenecks in the structure determination process. Currently, highly skilled manual handling is required; causing a significant learning curve. Feedback on ice quality requires screening on an electron microscope, time which could be used for more productive data collection. chameleon's aim is to enable automated, rapid progress to the perfect ice thickness for a range of samples by offering:



blot-free high speed plunging

Self-wicking grids allow rapid on-the-fly dispensing to reduce air water interface effects and potentially address preferred orientation, aggregation or denaturation effects



automated grid handling

Precise and controlled movement of grids eliminates manual damage and loss



on-board optical grid screening

Accept or reject grids ahead of EM screening based on visual images of likely grid quality



intuitive automated workflows

Guided workflows provide easy set-up, use and cleaning of the instrument for even novice users



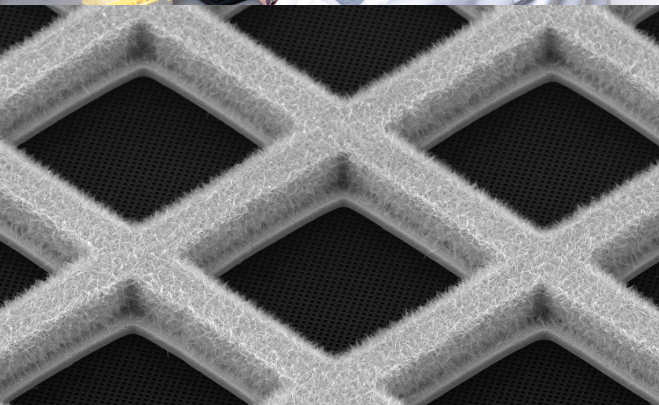
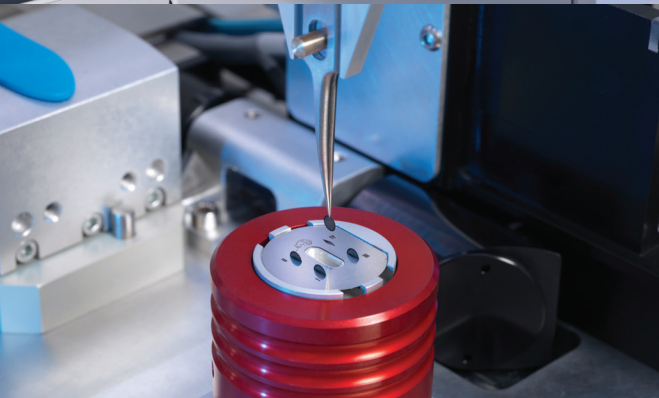
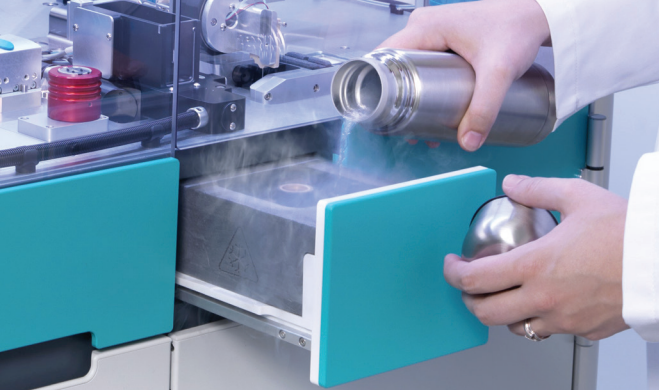
sample tracking and recording

Capture all relevant parameters and grid images for record keeping and future reproducibility



cryogen level sensing/temperature control

Ensure stability and quality of cryogens while safely kept in an automated drawer



meet
chameleon



specifications

- **integrated semi-automated characterisation and plunge speed tuning**
- **integrated post-dispense QC system**
- **session tracking and reporting datapack**
- **integrated control PC (Windows 10) & software license**

minimum sample volume	5 μ L
minimum dispense volume	6 nL
sample block temperature control	4°C to 37°C
standard dispense-to-plunge time	101 msec
high-speed dispense-to-plunge time	54 msec

references:

1. Spotiton: A prototype for an integrated inkjet dispense and vitrification system for cryo-TEM

Tilak Jain, Patrick Sheehan, John Crum, Bridget Carragher, Clinton S. Potter
2012, Journal of Structural Biology

2. A new method for vitrifying samples for cryo-EM

Ivan Razinkov, Venkata P. Dandey, Hui Wei Zhening Zhang, David Melnekoff, William J. Rice, Christoph Wigge, Clinton S. Potter, Bridget Carragher
2016, Journal of Structural Biology

3. Spotiton: New features and applications

Venkata P. Dandey, Hui Wei Zhening Zhang, Ashleigh Raczkowski, William J. Rice, Clinton S. Potter, Bridget Carragher
2018, Journal of Structural Biology

4. Optimizing “self-wicking” nanowire grids

Hui Wei Zhening Zhang, Venkata P. Dandey, Ashleigh Raczkowski, William J. Rice, Bridget Carragher, Clinton S. Potter
2018, Journal of Structural Biology

5. Reducing effects of particle adsorption to the air-water interface in cryo-EM

Alex J. Noble, Hui Wei, Venkata P. Dandey, Zhening Zhang, Yong Zi Tan, Clinton S. Potter & Bridget Carragher
2018, Nature Methods

get in touch

SPT Labtech Ltd

+44 (0) 1223 627 555
discover@sptlabtech.com

SPT Labtech Inc

+1 (855) 601 5867
discover@sptlabtech.com

SPT Labtech India Private Ltd

+91 9968291292
enquiries@sptlabtech.com

find us on



sptlabtech.com